

  
**LIQUICELL®**  
NIPPLE PROTECTORS

**APPLICATION**

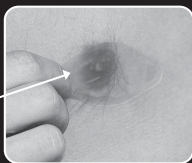
- Clean and dry the area before applying.
- Peel the paper backing off completely.
- Firmly press the bandage over nipple.
- If large creases or wrinkles occur, quickly remove and reapply, adhesive may weaken. Rub top of bandage for several seconds to warm adhesive.

\*Not recommended to leave same bandage on for more than 72 hours at a time. If skin area shows sign of new or increased irritation after application, immediately remove bandage. Consult your physician if you have any existing skin conditions or bandage causes any issues.

Do not apply bandage over open skin.

**LiquiCell® Nipple Protectors**

**PERPENDICULAR  
PRESSURE  
IS EQUALIZED**



**PARALLEL  
PRESSURE  
(Shear stress, friction)  
IS SIGNIFICANTLY REDUCED**

• Sealed liquid technology protects against blisters and abrasions

**LiquiCell® Nipple Protectors**  
for Ultimate Nipple Protection.

Ultra-thin liquid-filled membranes providing you daylong comfort and protection (with medical grade skin adhesive).

Relieves friction, chafing and abrasions.

The liquid in a LiquiCell® bandage circulates and moves in all directions so your skin doesn't.

Protect your skin from the start with LiquiCell® Nipple Protectors.

**Note:** Pro-Tec Athletics strongly urges consultation with a medical doctor before using any skin protection products.

**Warning:** Do not adjust too tightly or wear while sleeping.